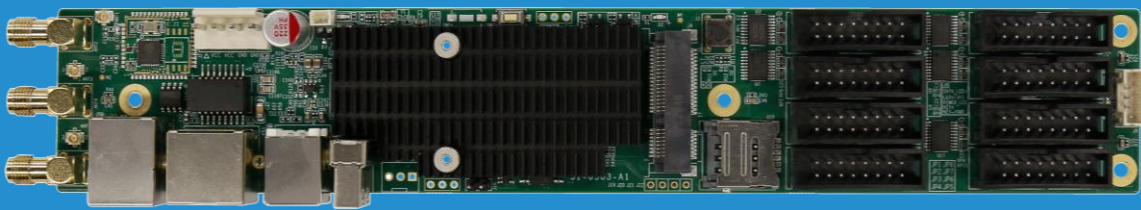




INSTRUCTIONS



A20 Player

USER MANUAL

Safety Precautions

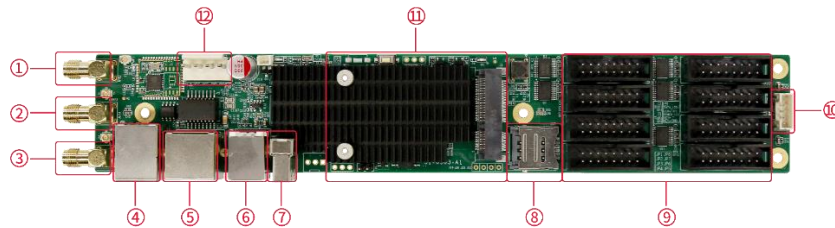
Before use of the equipment, please read all safety precautions to ensure safe and correct use of the product!

- **Please use the power supply and accessories approved by the manufacturer**
The power supply of this product supports DC 5V-12V power input. Please use the power cord conforming to the standard.
- **Avoid all functional interfaces from contacting live objects**
This product is an electronic product. If the functional interface contacts a live object, it may cause damage to the circuit components, thus affecting normal use of the product.
- **Keep away from inflammable, explosive and other dangerous goods**
Keep away from inflammables and explosives. Do not use this product in inflammable and explosive environment!
- **The 4G module (optional) and SIM card slot cannot be hot-swapped under any circumstances.**
- **Before and during installation, take necessary anti-static measures to avoid electrostatic discharge (ESD) damage to the A20 board hardware.**
- **When holding the A20 board, please hold the edge of the board, and do not touch the exposed metal and chip parts on the board, so as to avoid damage to components caused by static electricity.**
- **This product does not support waterproof design. Please install the A20 board in a dry environment, do not directly touch the liquid, and keep away from heat sources, electromagnetic interference sources and radiation sources, electromagnetic radiation sensitive equipment (such as medical equipment), etc.**

Safety Protection Measures

In all installation processes of A20 networking player, please follow the safety rules to avoid personal injury and equipment damage.

Interface Description



No.	Name	Function
1	WiFi ANT	External WiFi antenna, provide permanent WiFi hotspot, or connect to other WiFi routers
2	GPS ANT	External GPS antenna (optional)
3	4G ANT	External 4G antenna (optional)
4	SENSOR	RJ11 interface for connecting sensor probes to automatically adjust the brightness of the display screen; monitor and display parameters such as ambient brightness, smoke, temperature and humidity, and air quality
5	LAN	Fast Ethernet port, connect to wired network
6	CONFIG	USB-B interface, used to control equipment, set display parameters/publish programs
7	USB2.0	U disk playback
8	SIM card slot	Micro-SIM card slot (used with 4G module)
9	HUB75 interface	HUB75 data interface, connect the display unit board
10	External interface	External test button indicator
11	4G module interface	4G module installation interface, access to 4G network (4G module optional)
12	Power interface	DC 5-12V

Quick Start Guide

Users only need three steps to master the basic usage of A20 player.

Step I: Configure display parameters

- Connect the player to LED display screen correctly
- Configure LED display screen parameters and ensure that the display screen can display the complete picture

Step II: Configure player parameters

- Set player parameters (generally LED display screen resolution)
- Configure network parameters (set according to the customer's actual needs)

Step III: Edit and publish the program

- Create a program and publish it to the player

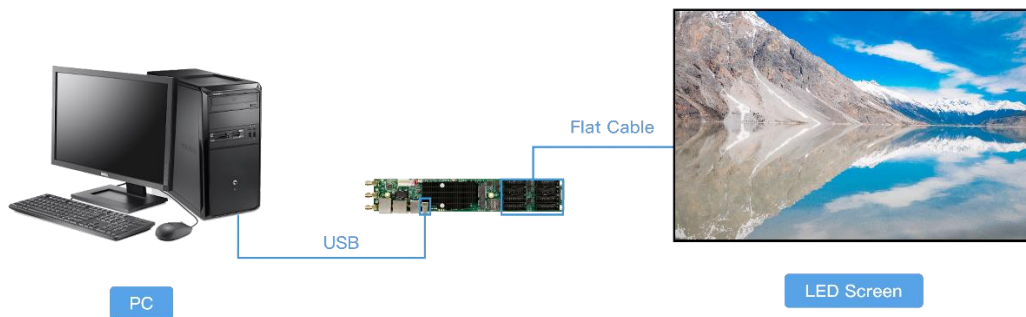
Note:

1. For detailed configuration, please refer to the content of next chapter.
2. The supporting software to be used can be downloaded on our official website: www.colorlightinside.com [Support] → [Download].

Detailed Setting Steps

Step I: Configure display screen parameters

1. Connect the player to LED display screen correctly



2. Configure LED display screen parameters and ensure that the display screen can display the complete picture

Open LEDVISION software, click [Control], and enter the password “168” to enter the display screen settings interface:

- Select the [play box] mode to detect the player.
- Select [Receiver Cards Parameters] interface, load the display screen parameters, and after clicking Send, select Save to Receivers.
- Select [Receiver Cards Mapping (Look From Front)] interface, load the connection relation, and after clicking Send, select Save to Receivers

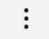
If the display parameters and connection relation parameters are not correct, please consult the display screen technical engineer.


Step II: Configure player parameters

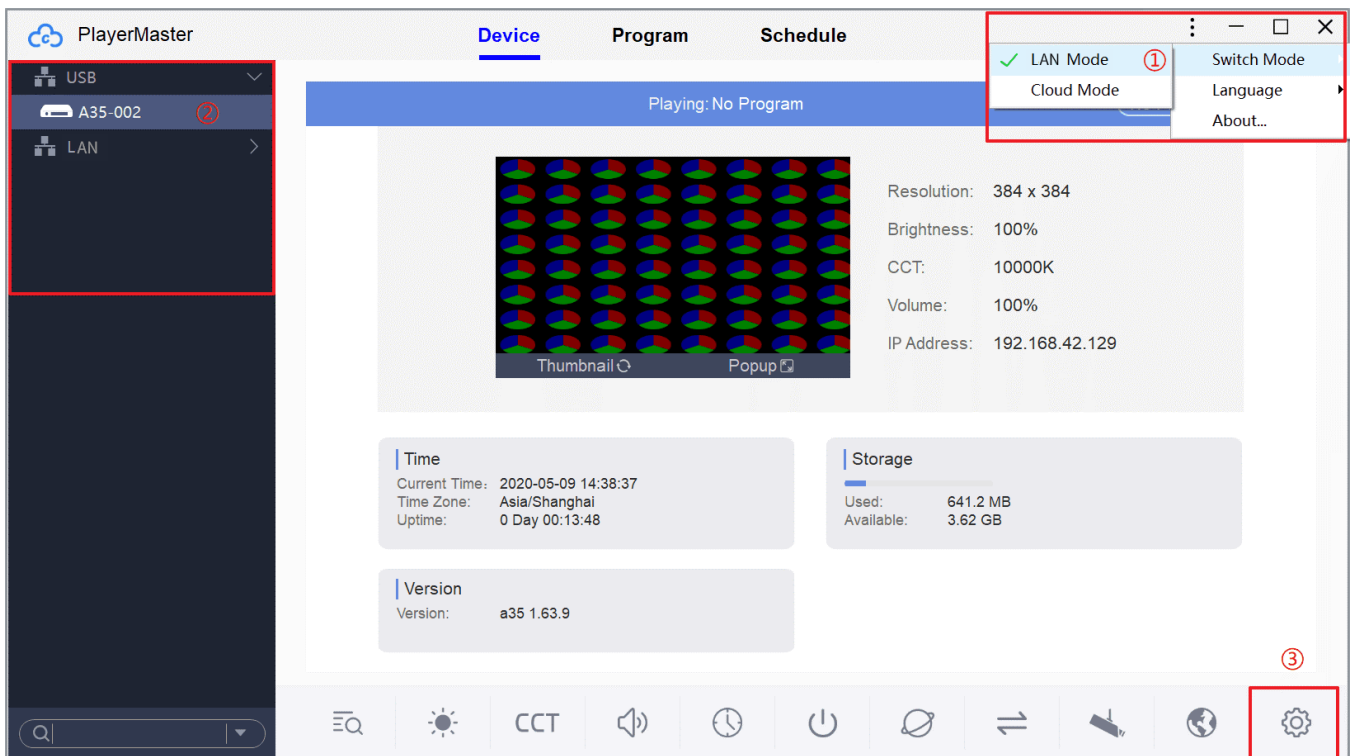
Player parameters mainly include three aspects:

1. Screen parameter: The width and height of program playing window, generally set as the size of LED display screen
2. Network parameters: Select according to the actual needs of customers.
 - Standalone play: No configuration is required
 - LAN mode: Configure LAN, WiFi and WiFi hotspots according to actual needs, and choose one of them
 - Cloud mode: Configure LAN, WiFi and 4G according to actual needs, and choose one of them
3. Other configurations: Others are not required to be configured for the time being. Configure if necessary.

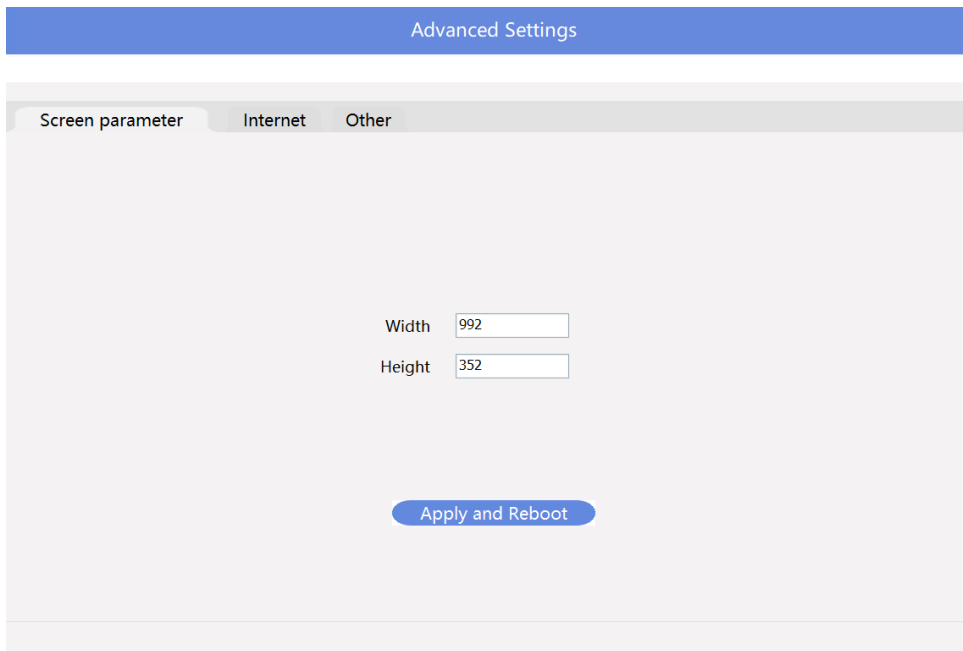
1. Set player parameters

Open PlayerMaster software, click  in the top right corner, and select [LAN Mode].


Select current player in the left list, and in the main interface of [Device], click Advanced Settings  in the bottom right corner to enter the parameter configuration interface.

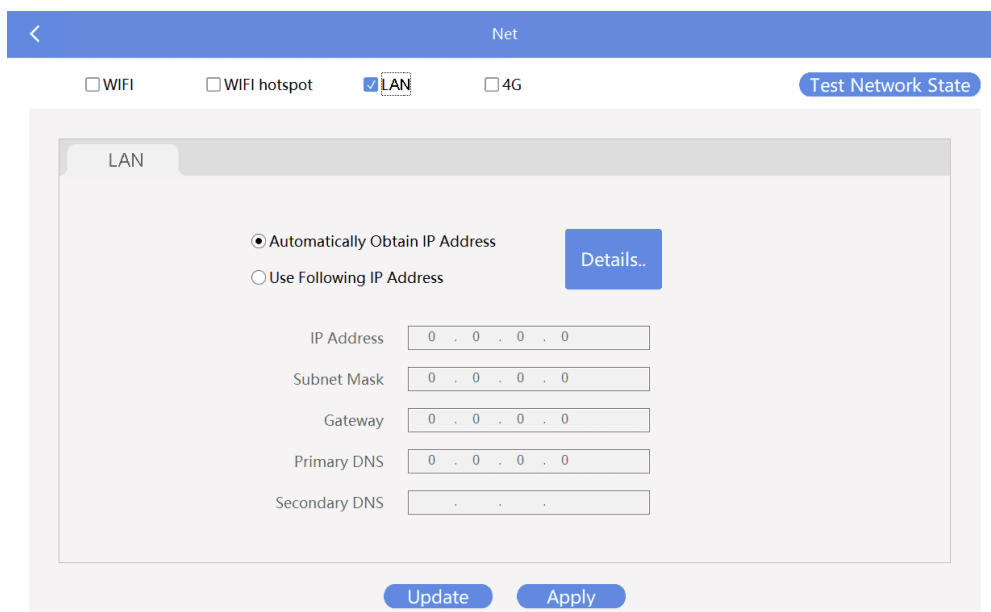


Screen parameter: Set the actual resolution of the screen.



2. Configure network parameters

In the main interface of [Device], click Network Settings  to enter the following interface:

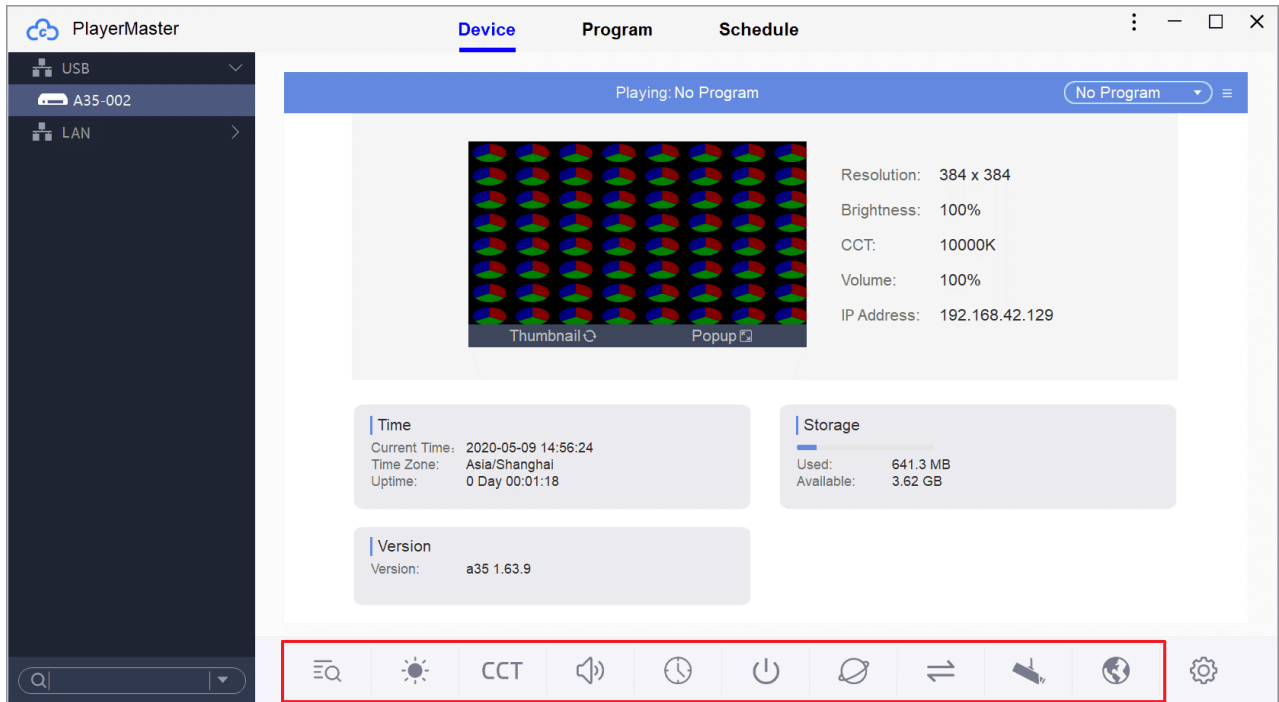


Take LAN port as an example. After it is connected to the network cable, the player will automatically obtain the IP address.

After setting successfully, program production, program publish, and equipment management can be implemented through this communication mode.

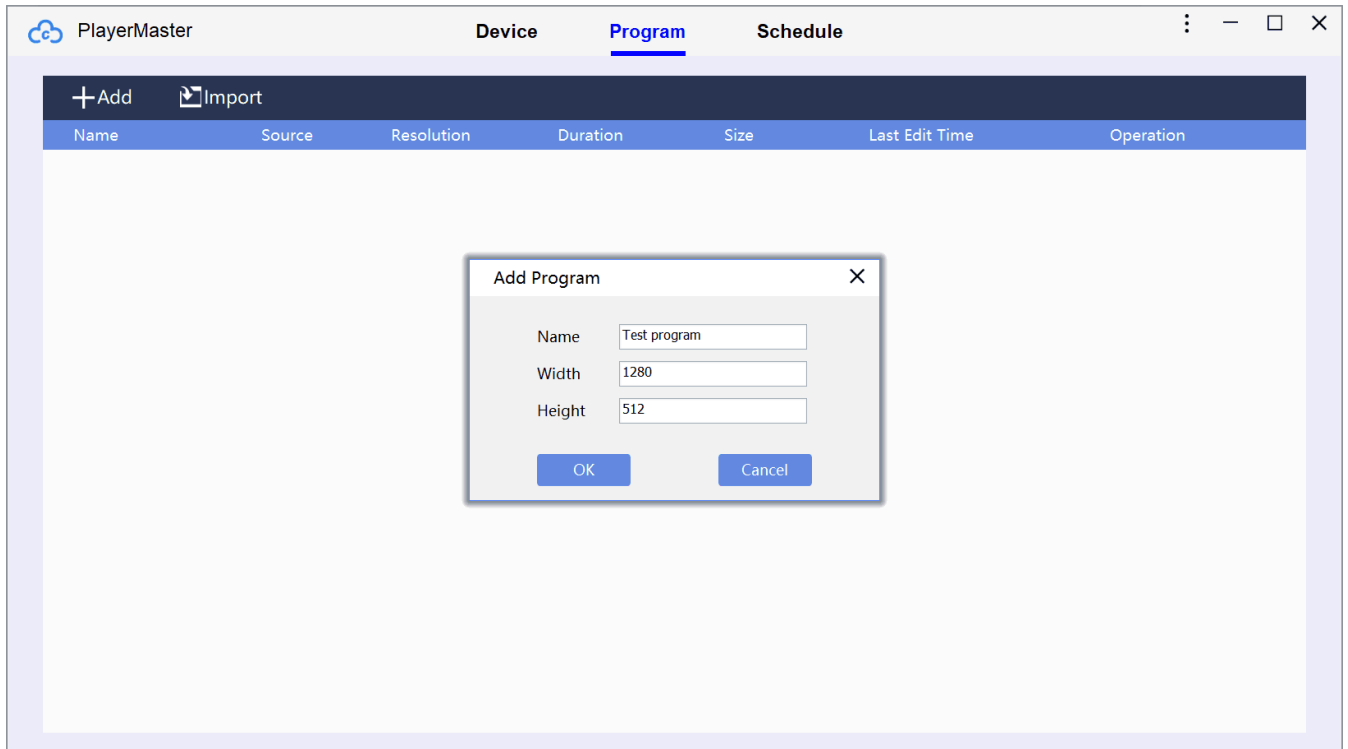
3. Optional: Configure other parameters of the player

Other functions: View schedule, brightness, color temperature, volume, time, power, net, signal switch, monitoring, and device language



Step III: Edit and publish the program

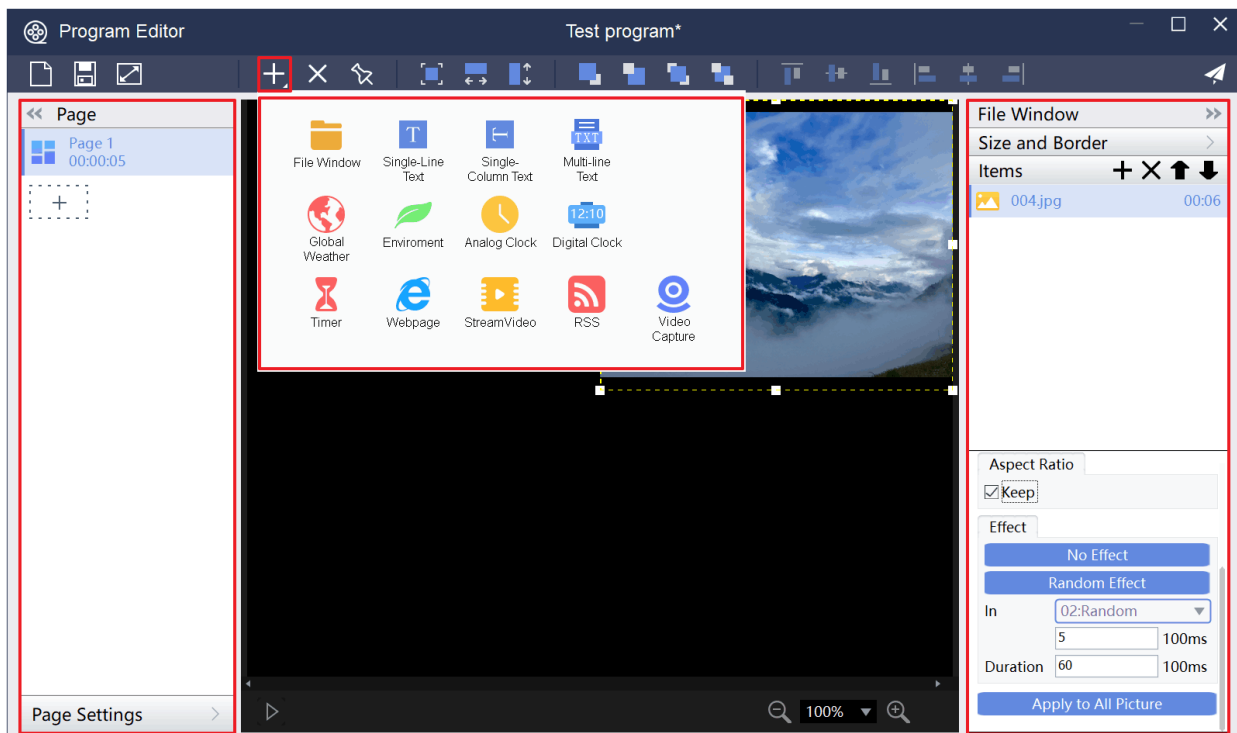
1. In the main interface of [Program], click **+Add**, set the resolution of the program (generally consistent with the resolution of the screen), and enter the program editor.



Program	Basic unit, which can be independently assigned to the player for playing.
Program page	When different window layouts are needed in the same program, it can be realized by setting different program pages. Of course, it can also be realized by setting different programs.
Window	Multiple program windows can be added to the program page, the content of different program windows is different, and the program windows under the same program page are played at the same time. Window determines the layout form of the program
Materials	The specific content displayed on the LED screen, including video, picture, GIF, text file, and office file.



Note: In each LED screen, the relation between the program page and the program page, and between the content and the content in the same program window is in-turn playing, while the relation between the program window and the window under the same program page is parallel and concurrent playing.

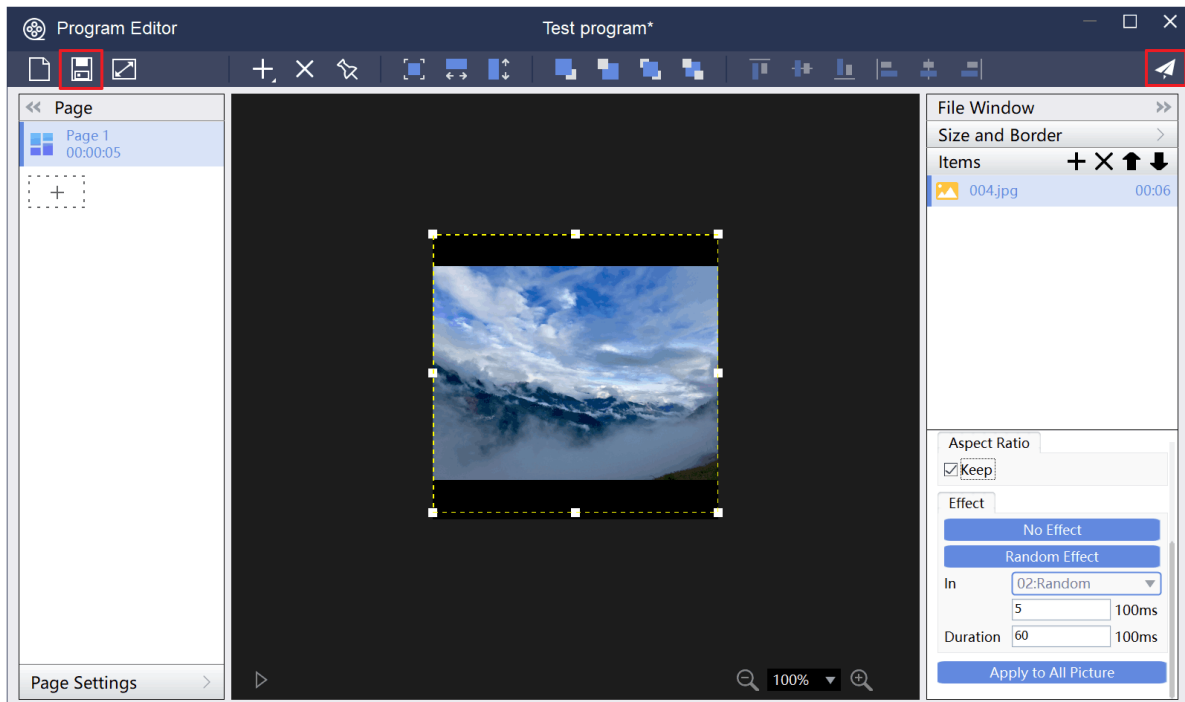
2. Click **+** to add programs in the following format types:



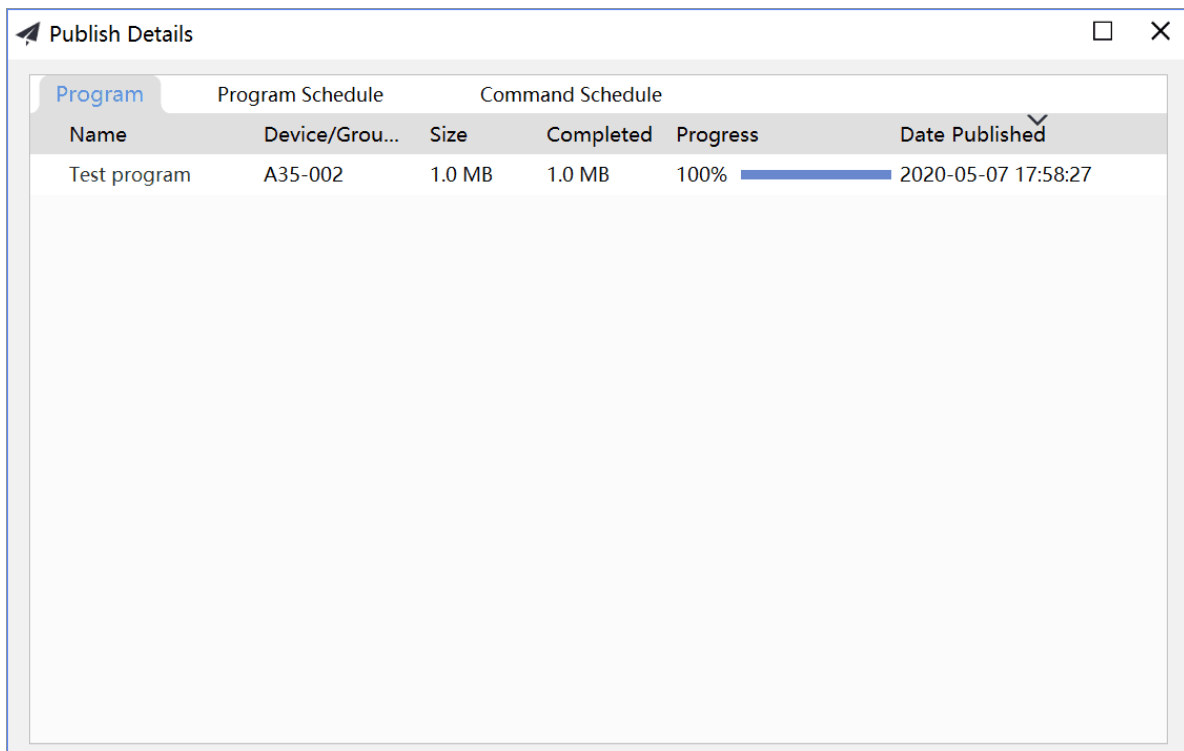
Description of Window Type

No.	Window Type	Description of Content
1	File window	Video, picture, Gif, Txt document, RTF document, Office document (Word, Excel, PPT)
2	Single-line text	Txt document, manual editing and input
3	Single-Column text	Txt document, manual editing and input
4	Multi-line text	Txt document, RTF document, Word document, manual editing and input
5	Global Weather	Weather in global cities
6	Environment	Temperature, humidity, smoke, noise and air quality
7	Analog Clock	Round image clock
8	Digital Clock	Digital timing clock
9	Timer	Count-up timer, count-down timer
10	Webpage	Manually enter the website. E.g. www.colorlightinside.com
11	Stream Video	Program on the streaming medium website
12	RSS	News subscription


3. Select different program windows and materials according to actual needs. After editing, click Save  and select Publish .



After finishing releasing, the released content just now will be displayed on LED display screen.



The screenshot shows the 'Publish Details' window. It contains a table with the following data:

Program		Program Schedule		Command Schedule	
Name	Device/Grou...	Size	Completed	Progress	Date Published
Test program	A35-002	1.0 MB	1.0 MB	100% 	2020-05-07 17:58:27

More

Now you have mastered the use of basic functions of A20 player.

If you need to learn more advanced functions, please refer to PlayerMaster User Manual or contact the Company' s technicians for more information.



Visual Future

Colorlight Cloud Tech Ltd
www.colorlightinside.com