



## ENFORCER7X60BE

7x 60 W RGBW Moving Head with Pixel Control

### USER MANUAL



**For safety, please read this user manual carefully before initial use.**

Event Lighting reserves the right to revise the manual at any time. Information and specifications within this manual are subject to change without notice. Event Lighting assumes no liability or responsibility for any errors or omissions. Please consult Event Lighting for any clarification or information regarding this item.

Version: 12002001

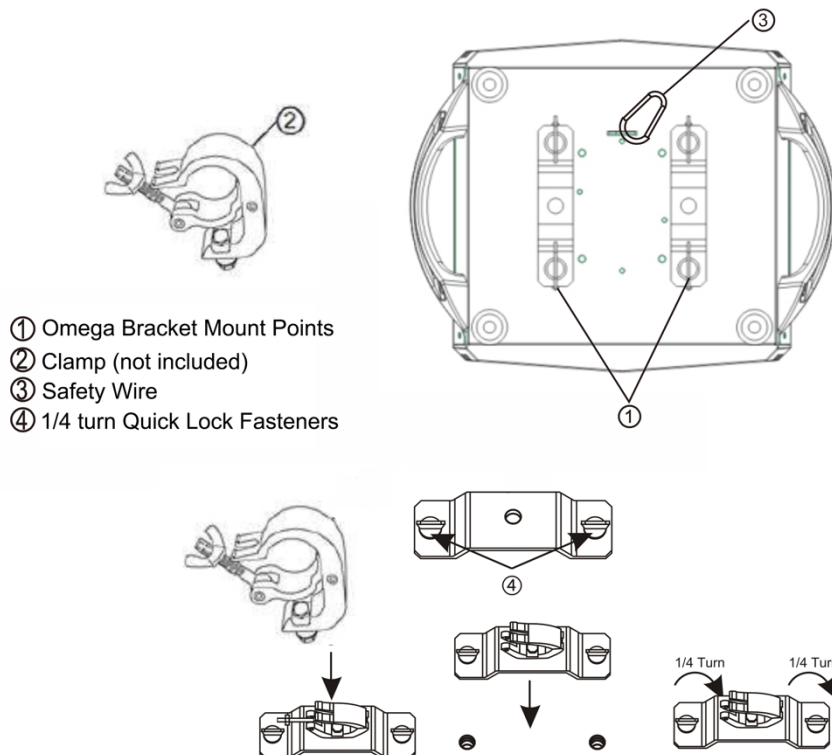
# Safety Instructions

## Warning

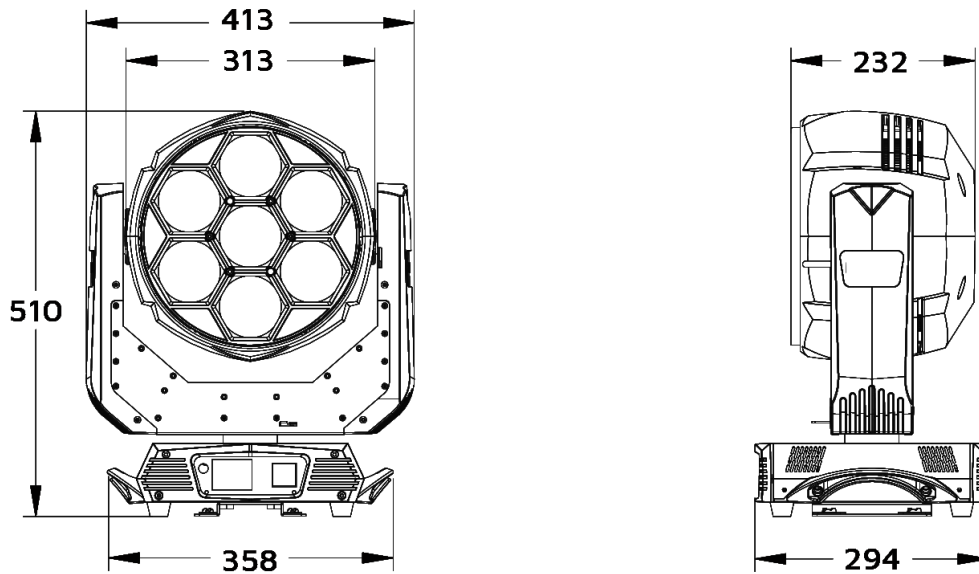
- Do not open this device, there are no user-serviceable parts inside.
- Do not look at the light source when the device is on.
- This unit's housing may be hot during and after operation.
- Install this device in a location with adequate ventilation, at least 20 inches (50 cm) from adjacent surfaces.
- Do not leave any flammable material within 20 inches (50 cm) of this unit while operating or connected to power.
- Do not operate this device outdoors or in any location where dust, excessive heat, water, or humidity may affect it.
- Do not operate this device if the housing, lenses, or cables appear damaged.
- Do not connect this device to a dimmer or rheostat.
- ONLY connect this device to a grounded and protected circuit.
- ONLY use the hanging bracket to carry this device.
- In case of a serious operating problem, stop using immediately.
- The maximum ambient temperature is 104° F (40° C). Do not operate this device at higher temperatures.

## Product Installation

- This device can be mounted in many orientations provided each individual device is secured by the use of correct mounting bracket.
- Use a safety chain when mounting this device overhead.



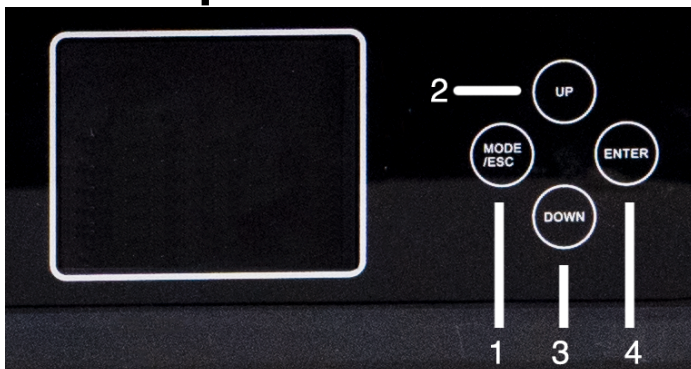
## Dimensions



## Lux Chart

Lux			
	2m	5.0m	10.0m
@ 3.5°	Ø0.15	Ø0.31	Ø0.61
	180,900	57,478	16,168
@ 60°	Ø2.89	Ø5.77	Ø11.5
	5,634	1,065	324

## Menu Operation



1. Mode/Esc – Move up a level.
2. Up – Move selection up one item.
3. Enter – Select / Move down a level.
4. Down – Move selection down one item

# Menu

Level 1	Level 2	Options/Values	Description
Information	Address	1-512	Set the DMX address.
	Runtime	<Time>	Display total uptime.
	Version	<Version>	Display current software version.
	Temperature	<Temperature>	Display current temperature.
	Fan Speed	<Fan Speed>	Display current fan speed.
		<Voltage>	Display case fan voltage.
Setting	Reset	Reboot	Reboot fixture.
		Default Data	Reset to factory settings.
	Channel Set	21/35/42/49	Set DMX Channel mode.
	Run Mode	DMX512/MIC/DEMO/ ARTNET/PROGRAM	Set run mode.
	Offline Set	Home/Hold	Set behaviour when DMX signal lost.
	Fan Set	Normal/Performance/Quiet	Set fan control mode. Performance – fastest speed. Quiet – lower speed.
	Wireless Set	On/Off	Enable/disable wireless.
	Adjust	X/Y/Zoom/Rotation/Fan Speed (Options other than Reset require Setting Lock key to be inputted)	Calibration Settings Reset: Reset adjustment and reverse option (X/Y only). Reverse: Reverse X/Y direction Adj: Adjustment for the selected option.
	Artnet Set	IP address	IP address for ArtNET
		Subnet mask	Subnet mask for ArtNET
		Universe	Universe for ArtNET
	RDM UID	<RDM Code>	Code for RDM
Lamp	Auto On		No function.
	Light Up		No function.
	Lamp Adjust		No function.
	Lamp Fail		No function.
Display	Language	English/Chinese/Russian	Select display language.
	Backlight	On/Off/Flash	Select display backlight setting.
	Reverse	On/Off	Reverse display.
User	Setting Lock	On/Off	Code to unlock advanced settings.
	Key Lock	On/Off	Locks the keys on the control panel after 1 minute. Hold Mode/Esc for 4 sec to unlock.
	Test		Start test mode. Press Mode/Esc to exit.

	Program	Select Program 1-8	Select auto run program.
		Edit	Edit the selected program

Press Mode/Esc to open the menu. When opened, the menu is on Level 1, and pressing Up or Down will scroll between options on Level 1. Press Enter on a Level 1 menu to access its Level 2 options.

Press Enter on a Level 2 option to access that option. An arrow will appear next to the currently selected option, if it is modifiable. Press Up/Down to scroll through the available options, then press Enter to open it.

Press Up/Down to adjust the selected option, then press Enter to confirm. Once completed, press Mode/Esc to go up a level.

## Wireless Settings

To enable W-DMX™ control, set Wireless Set to On, then start the pairing process from the transmitter. The fixture will connect automatically.

To unpair from the transmitter, set Wireless Set to Off, then back to On. This will allow you to pair to a different transmitter.

## DMX Chart

- This fixture is controlled by the universal DMX 512 protocol. The DMX address is the first channel used to receive instructions from the external controller. For independent control, each fixture must be assigned a unique address for each of its control channels. For example, this device has four channel modes: 21/35/42/49, if it's set to 21 channel mode, and there are several fixtures need to be independently controlled, we just simply address first fixture at 1, and second fixture at 22, third one at 43, etc.
- If multiple fixtures have the same DMX address, they will behave synchronically.
- Display will flash when no DMX signal is received.

Mode/Channel				Value		Function
21 Ch	35 Ch	42 Ch	49 Ch			
1	1	1	1	0	255	Red, 0 - 100%
2	2	2	2	0	255	Red-fine, 0 - 100%
3	3	3	3	0	255	Green, 0 - 100%
4	4	4	4	0	255	Green-fine, 0 - 100%
5	5	5	5	0	255	Blue, 0 - 100%
6	6	6	6	0	255	Blue-fine, 0 - 100%
7	7	7	7	0	255	White, 0 - 100%
8	8	8	8	0	255	White-fine, 0 - 100%
9	9	9	9	0	255	Colour temperature, cool to warm
10	10	10	10	0	255	Colour macro
11	11	11	11	0	67	Strobe, slow to fast, fade in and out
				68	99	Strobe, slow to fast, fade in
				100	131	Strobe, slow to fast, fade out
				132	175	Strobe, slow to fast, equal time on/off
				176	247	Strobe, slow to fast, short on, long off
				248	252	Sync random strobe
				253	255	Asynchronous random strobe

12	12	12	12	0	255	Dimmer, 0 - 100%
13	13	13	13	0	255	Dimmer-fine, 0 - 100%
14	14	14	14	0	255	Pan
15	15	15	15	0	255	Pan-fine
16	16	16	16	0	255	Tilt
17	17	17	17	0	255	Tilt-fine
18	18	18	18	0	255	Dimmer mode
19	19	19	19	0	255	Reset
20	20	20	20	0	255	Zoom
21	21	21	21	0	103	Rotation – fixed positioning
				104	179	Rotation, clockwise, fast to slow
				180	255	Rotation, anti-clockwise, slow to fast
	22			0	255	Shape option
	23			0	255	Shape speed, fast to slow
	24			0	255	Shape gradual change
	25			0	255	Shape red, 0 - 100%
	26			0	255	Shape green, 0 - 100%
	27			0	255	Shape blue, 0 - 100%
	28			0	255	Shape white, 0 - 100%
	29			0	255	Shape dimmer, 0 - 100%
	30			0	255	Background dimmer, 0 - 100%
	31			0	255	Shape change
	32			0	255	Shape manual control (manually step through shape patterns)
	33			0	255	Shape strobe
	34			0	255	Background strobe
	35			0	255	Background option
		22	22	0	255	LED 1 Red, 0 - 100%
		23	23	0	255	LED 1 Green, 0 - 100%
		24	24	0	255	LED 1 Blue, 0 - 100%
			25	0	255	LED 1 White, 0 - 100%
		25	26	0	255	LED 2 Red, 0 - 100%
		26	27	0	255	LED 2 Green, 0 - 100%
		27	28	0	255	LED 2 Blue, 0 - 100%
			29	0	255	LED 2 White, 0 - 100%
		28	30	0	255	LED 3 Red, 0 - 100%
		29	31	0	255	LED 3 Green, 0 - 100%
		30	32	0	255	LED 3 Blue, 0 - 100%
			33	0	255	LED 3 White, 0 - 100%
		31	34	0	255	LED 4 Red, 0 - 100%
		32	35	0	255	LED 4 Green, 0 - 100%
		33	36	0	255	LED 4 Blue, 0 - 100%

			37	0	255	LED 4 White, 0 - 100%
		34	38	0	255	LED 5 Red, 0 - 100%
		35	39	0	255	LED 5 Green, 0 - 100%
		36	40	0	255	LED 5 Blue, 0 - 100%
			41	0	255	LED 5 White, 0 - 100%
		37	42	0	255	LED 6 Red, 0 - 100%
		38	43	0	255	LED 6 Green, 0 - 100%
		39	44	0	255	LED 6 Blue, 0 - 100%
			45	0	255	LED 6 White, 0 - 100%
		40	46	0	255	LED 7 Red, 0 - 100%
		41	47	0	255	LED 7 Green, 0 - 100%
		42	48	0	255	LED 7 Blue, 0 - 100%
			49	0	255	LED 7 White, 0 - 100%

## Technical Specifications

### Photometrics

- Light Source: 7x 60 W Osram RGBW LEDs
- Beam angle: 3.5° - 60°
- Colour Temperature: 2,500-8,000 K, adjustable
- Output: 180,900 lux @ 3.5° @ 2.5 m
- LED Lifespan: 50,000 hours

### Effects

- Dimming: 0-100%
- Strobe: 0-20 Hz
- Zoom: Motorised, 3.5-60°
- Pixel Control: Yes
- Front Lens: Bi-directional rotating

### Movement

- 16-bit movement, auto reposition.
- Pan: 540° (2.8 s)
- Tilt: 270° (1.8 s)

### Power

- Power supply: 100-240 V AC, 50/60Hz
- Power consumption: 600 W
- Connection: Neutrik powerCON in/out

### Control

- Operation Modes: DMX, Manual, Auto, Sound Active, Master/Slave
- Control Protocol: DMX512, RDM, two-way W-DMX™
- DMX Channels: 21/35/42/49
- Control Interface: 5-pin DMX in/out
- Display: 2.4" colour LED display, auto reversing, with 4-button control

## **Housing**

- Housing Materials: ABS and steel, matte black finish
- Cooling: multi-sensor thermostat controlled variable speed fan
- IP Rating: IP20
- Dimensions: 550\*410\*540 mm (package)
- Net Weight: 17kg
- Rigging: 2x omega brackets with ¼ turn quick locks

## **Optional Accessories**

- Road Case: ENFORCER7X60BEC (fits 2)

## **Warranty**

Please refer to your local dealer or contact Event Lighting Pty Ltd.