

HC II Series New

Indoor Narrow Pixel Pitch Display

HC II Series

The HC II series is a narrow pixel pitch display, featuring stunning HD vividness, lightweight design, practical, safety, and stability



Panel Dimensions

600×337.5×43mm



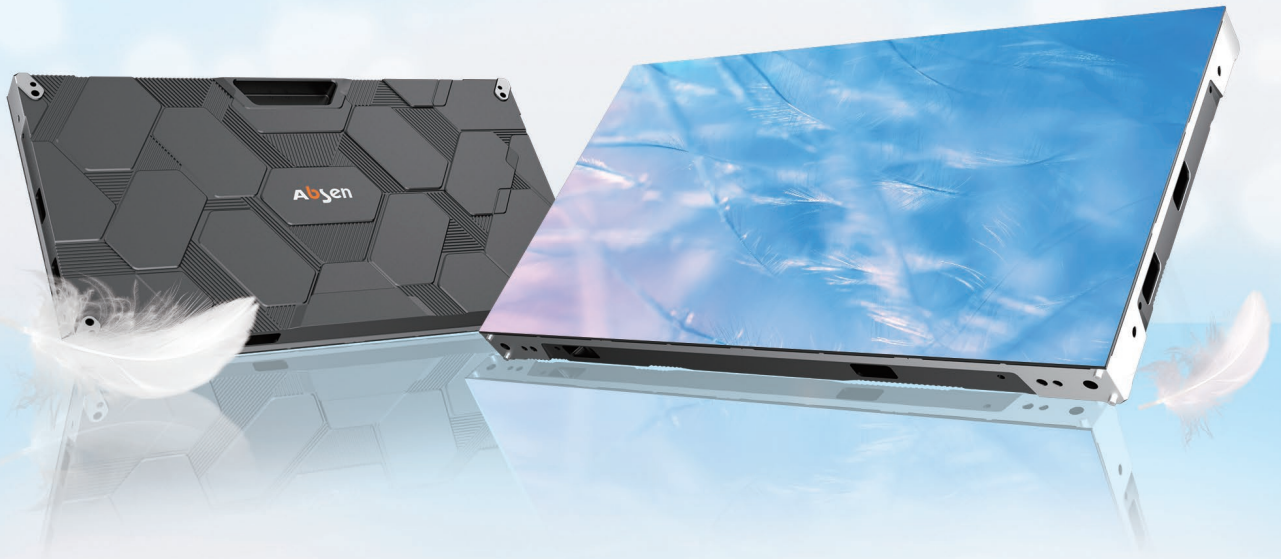
Weight

4.5kg



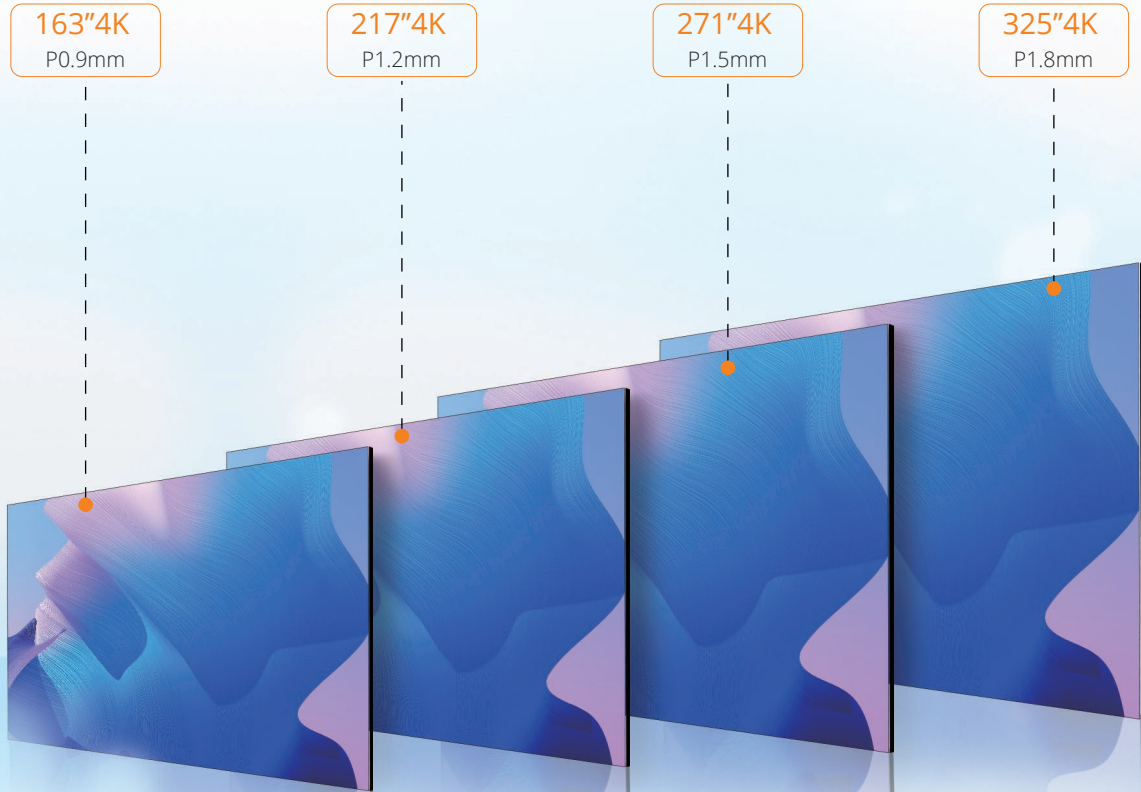
Material

Die casting aluminum



Small Pixel Pitch - Infinite Display

Multiple pixel pitches can be provided,
so the screen size can be selected for the needs of application scenario



HC II Series



Ultra Light & Thin

Light design for easy disassembly



Stunning View

Professional image processing technology



Flexible Splicing

Supporting curved and 90° installation



High Reliability

IMD 4-in-1 package, dual backup power and signal



HBB Technology

High brightness with less power consumption



Efficient maintenance

Full front maintenance

Ultra Light & Thin

Light weight design, a single panel weighs only 4.5KG, reducing the difficulty of disassembly and installation, simple and practical for a better experience



Efficient Cooling and Stable Display

The panel has a honeycomb-shaped and 3D design with a larger cooling space, all-aluminum construction guarantees effective and consistent cooling, preserving the consistency of the display

Unique honeycomb elements

3D pattern



Die casting aluminum

High Reliability

Dual backup power and signal ,two power source inputs,ensure uninterrupted display and stable transmission



power 1



power 2



FHD / 4K / 8K Screens

Exceptional picture quality with great level of detail for easy splicing of FHD, 4K, 8K screens



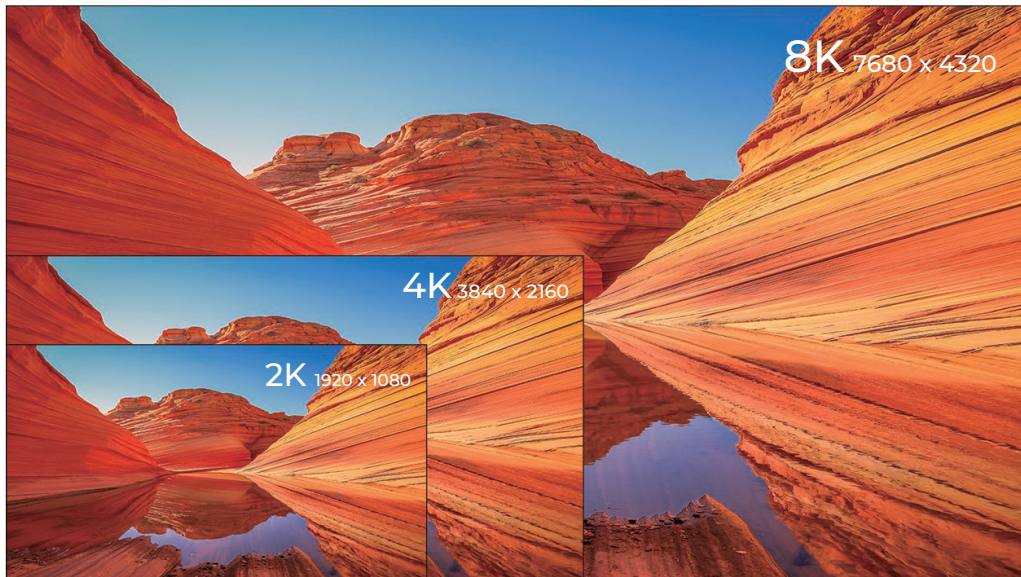
16:9 display aspect ratio

Mainstream video screen ratio
Point-to-point representation with no retouching needed



4K/8K splicing

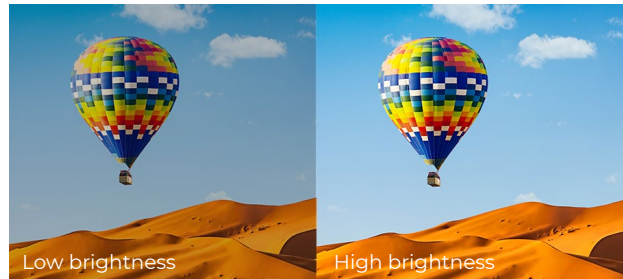
Free splicing
Easy splicing of 4K/8K screens



Model	3x3	4x4	5x5	6x6	8x8	10x10	12x12	16x16	20x20	24x24
HC0.9 Pro II	1920 x 1080			3840 x 2160			7680 x 4320			
HC1.2 II HC1.2 Pro II		1920 x 1080			3840 x 2160			7680 x 4320		
HC1.5 II			1920 x 1080			3840 x 2160			7680 x 4320	
HC1.8 II				1920 x 1080			3840 x 2160			7680 x 4320

High Grayscale and Low Brightness

PWM constant current output high-end chip achieves low brightness and high gray.
Rich colors and vivid detail provide an optimal visual experience



High-quality image performance

Equipped with professional color management technology, the hardware perfectly supports the HDR10/HLG standard, eliminates color deviation, and the color performance is closer to the human perception

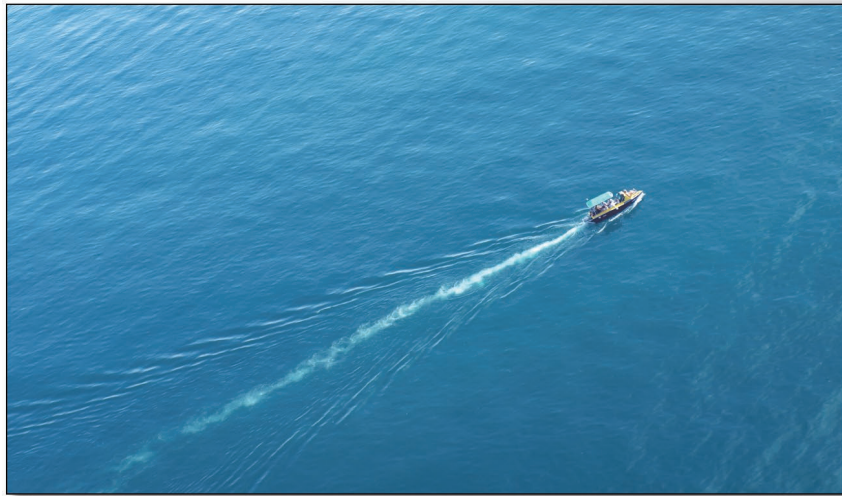
● Color Management Technology

● HDR/HLG Standard (optional)



Eye Protection

Keep eyes comfortable with TÜV Rheinland Eye Comfort Certification, minimizing harmful blue light, which means your eyes won't tire even watching the screen for a long time



HBB Energy-saving Technology

Through precise power supply, achieving high brightness and low power consumption



High brightness

30% increase in brightness



Low power consumption

Reduce energy consumption by 20%



Strong cooling

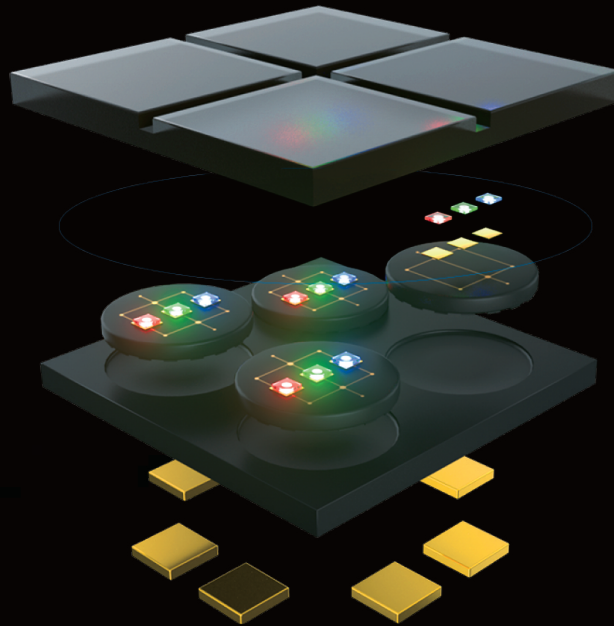
Effectively reduce the surface temperature ,
and no heat sensation when closing to it



HBB: High Brightness Black

IMD Four-in-one Package

IMD four-in-one integrated encapsulation technology provides high flatness, excellent and consistency display



X2.5

Improved anti-collision
ability

20%

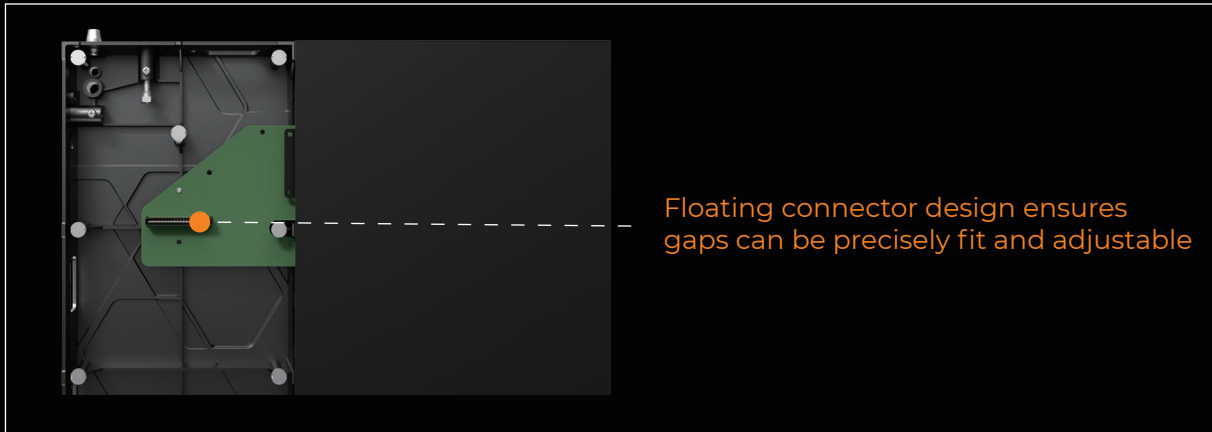
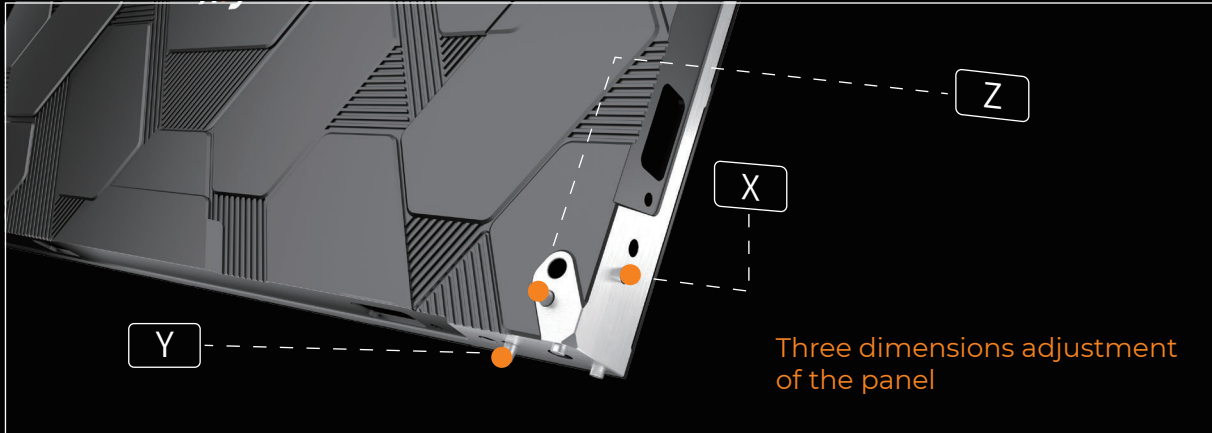
Contrast enhancement

X3

Flatness improvement

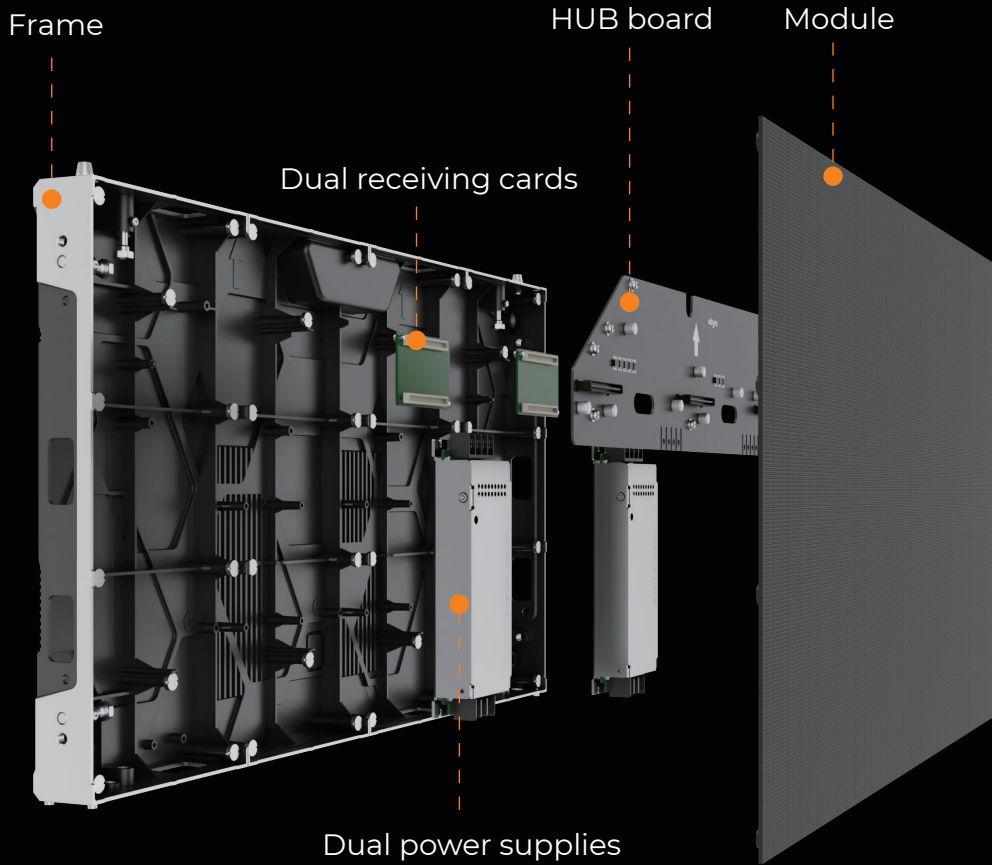
3D Precise Align Technology

With Precise Align technology, panel and module can achieve three dimensions adjustment, which makes the surface of product flat and clear



Convenient Maintenance

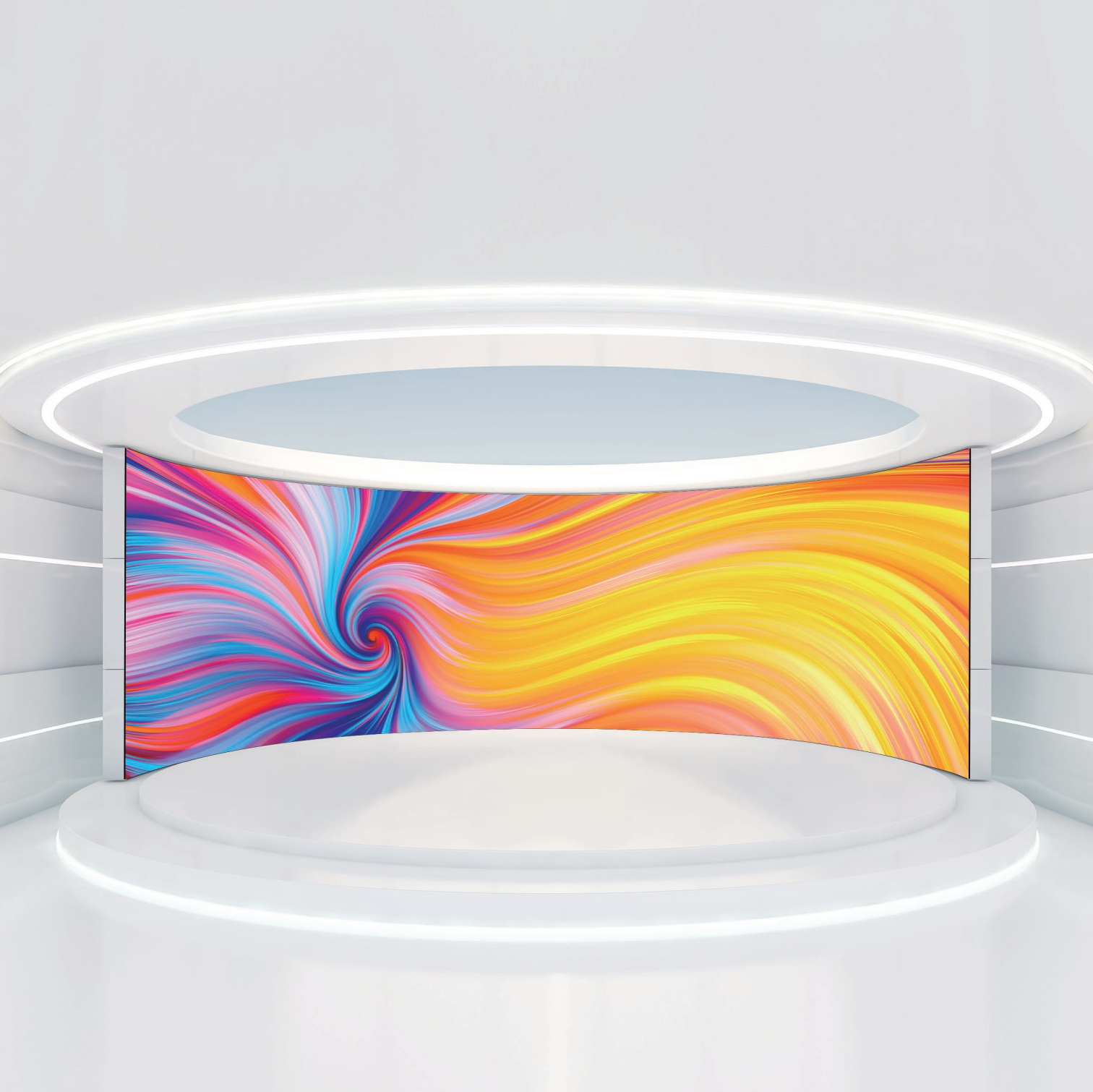
Supports full front maintenance,module,HUB board,and receiving card can all be front maintenance,that makes maintenance simpler and more effective



Dynamic & Concave for Optimal Visual Display

Using 150×337.5mm small panel for splicing, each supports a maximum internal arc of 3°, creating an immersive visual experience





Fast & Flexible Installation

Offers versatile installation options including stacking, wall-mounting, hanging, and precise 90° splicing, catering to a wide array of environmental requirements with ease





● Hanging



● 90° splicing

Applications



Control Room



Conference Room



TV Studio



Exhibition

Parameters

Model	HC0.9 Pro II	HC1.2 Pro II	HC1.2 II	HC1.5 II	HC1.8 II
LED type	IMD	IMD	SMD	SMD	SMD
Pixel pitch (mm)	0.93	1.25	1.25	1.56	1.87
Brightness (nit)	600	600	600	600	600
Refresh rate (Hz)	3840	3840	3840	3840	3840
Grayscale (Bit)	14	14	14	14	14
Power (Max./Avg.)(W/m ²)	620/205	510/170	385/130	345/115	395/135
Viewing angle (H/V) (°)	160/140	160/120	150/150	160/160	160/160
Panel size (WxHxD)/(mm)	600x337.5x43	600x337.5x50	600x337.5x43	600x337.5x43	600x337.5x43
Module size (WxH)/(mm)	150x337.5	150x337.5	150x337.5	150x337.5	150x337.5
Panel weight (kg)	4.5/4.9	5.2/5.6	4.5/4.9	4.5/4.9	4.5/4.9
Panel material	Die Casting Aluminum	Die Casting Aluminum	Die Casting Aluminum	Die Casting Aluminum	Die Casting Aluminum
Module maintenance	Front maintenance	Front maintenance	Front maintenance	Front maintenance	Front maintenance
Operating temperature (°C)	-10~+40	-10~+40	-10~+40	-10~+40	-10~+40
Operating humidity (RH)	10%-80%	10%-80%	10%-80%	10%-80%	10%-80%

★ Shenzhen Absen Optoelectronic Co., Ltd. reserves the right to modify product design, specifications, and parameters without further notice.
 Photos are used for illustration purpose only as products may differ from these photos. All rights reserved by Shenzhen Absen Optoelectronic Co., Ltd.
 The appearance of the product is subject to the actual product

Professional service, best experience

Absen has built up a global network ,
able to provide prompt and professional local services.

Absen service ability



Comprehensive support

Enjoy 2-year warranty, 3years extended warranty, lifetime maintenance, and enjoy 10+ items of professional service solutions to help you solve problems



Global coverage

500+ Absen certified partners, 3000+ Absen certified engineers, covering most of the global market, the global service network is continuing to expand vigorously



Multiple service channels

Providing service via multiple channels such as Hot line, WeChat, WhatsApp, E-mail and official website to quickly take care of service requirements



24 / 7 response

24/7/365 available, quick response in 10 seconds



One-stop service

Enjoy exclusive and professional service in the whole process of pre-sales, sales and after-sales

Absen service philosophy

Initiative

Proactive care and return visits,
regular touring inspection services for customers

Efficiency

All service channels respond within 10 seconds,
intelligently match the best local service resources,
and enjoy a fast service experience

Standardization

Comprehensive service engineer training system,
ACE professional training and certification,
ACP professional certification; establishing customer's
product files and record the entire service process

Thoughtfulness

Longer warranty, worry-free quality



Service channels

Hot line: +86 400-700-3278
WeChat: 13923413428
WhatsApp: 008613923413428
E-mail: service@absen.com
Official website: www.absen.com



Service time(GMT+8)

7X24 hours online service

Absen Optoelectronic Co.,Ltd

18-20F Building 3A, Cloud Park, Bantian,
Longgang District Shenzhen, 518129, P.R.China
T: +86-755-89747399 E: absen@absen.com
F: +86-755-89747599 W: www.absen.com

Absen Inc.

7120 Lake Ellenor Drive, Orlando,
Florida 32809, USA
T: +1-407-203-8870 E: info@usabsen.com
F: +1-407-203-8873 W: www.usabsen.com

Absen GmbH

Hessenring 4c, 64546 Moerfelden-Walldorf (Frankfurt am Main),
Germany
T: +49 (0) 6105 718941-0 E: europe@absen.com
F: +49 (0) 6105 718941-29 W: www.absen-europe.com