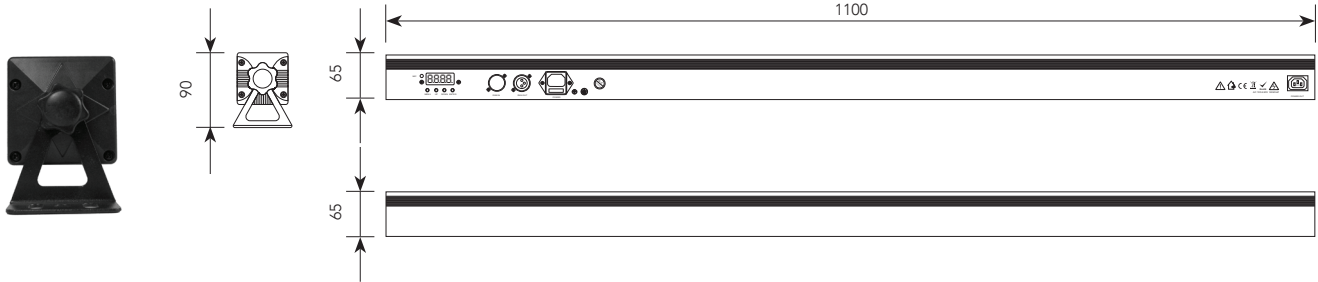


BAR224FXL

224 X SMD 5050 RGB LED FX BAR

EVENT LIGHTING **lite**

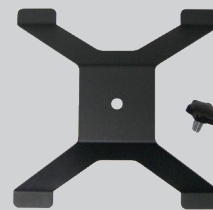


Photometrics	BAR224FXL
Light Source:	224 x SMD 5050 RGB LEDs
Beam Angle:	90°
Output:	
PWM:	10,000 Hz
Led lifespan:	50,000 hours
Effects	
Dimming:	0-100%
Strobe:	1~30 Hz
Power	
Power consumption:	96W
Input Voltage:	100~240 V AC, 50/60 Hz
Connection:	IEC in/out
Control	
Control Protocol:	DMX512
DMX Channels:	3 / 5 / 8 / 24 / 48 / 53
Interface:	3-pin XLR in/out
Operational Modes:	DMX, manual, auto, sound active, master/slave
Display	4-button LED control panel
Housing	
Materials:	Aluminium, matte black finish
Dimensions:	1100 x 65 x 65 mm
IP rating:	IP20
Net Weight:	3.5 kg

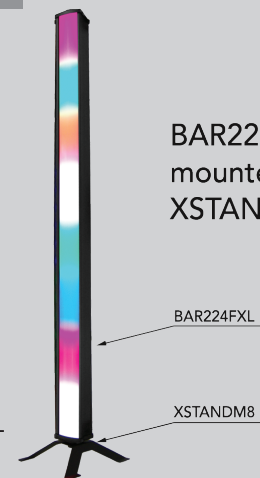


Optional Accessories

XSTANDM8

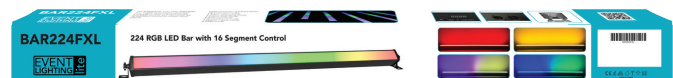


'X' floor stand with M8 thread to suit BAR224FXL, BAR24X4L and various fixtures



BAR224FXL mounted on a XSTANDM8

Lux @ 30°	PIXBAR12H				
	1.0m	2.0m	3.0m	4.0m	5.0m
R	913	375	190	119	87
G	1,164	486	250	156	113
B	1,157	468	240	154	109
W	1,706	678	351	219	158
A	673	257	135	189	67
U	290	116	59	36	26
Full	5,180	2,050	1,067	660	471



BAR224FXL